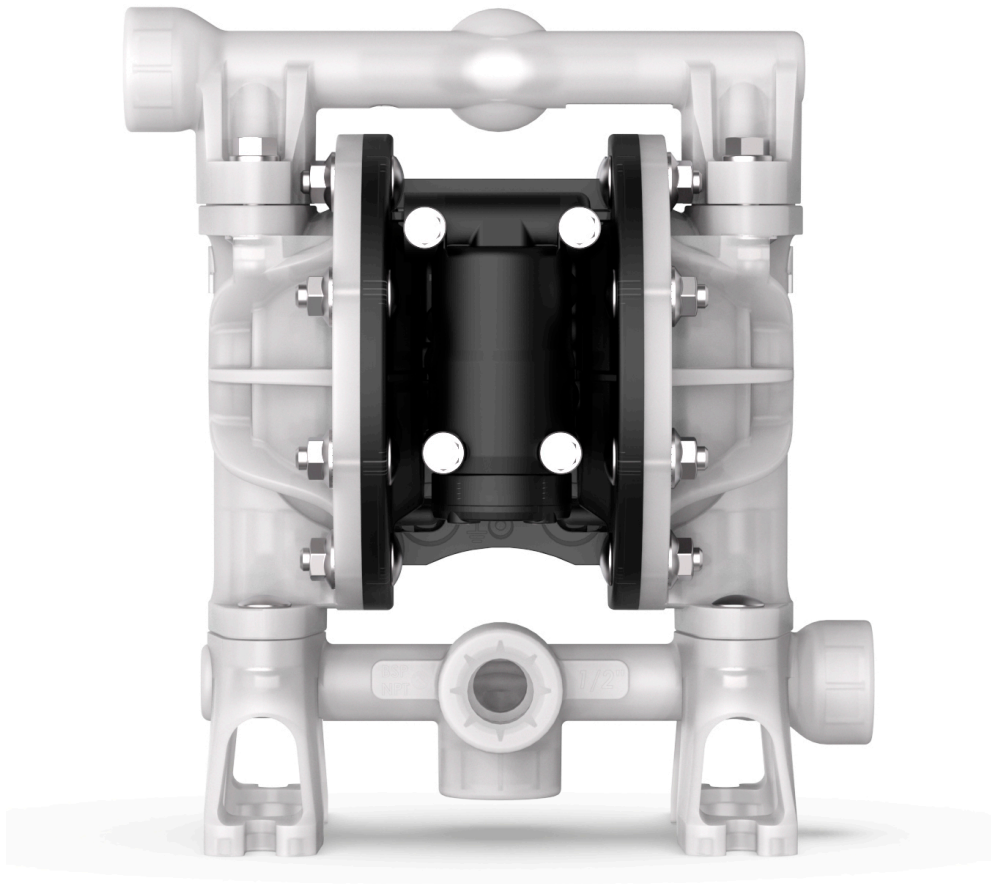


## DIAPHRAGM PUMP 1/2" PP-BUNA-N-BUNA-N



Part No  
**UP05B-BPS-PNG**

## TECHNICAL DATA

### DIAPHRAGM PUMP 1/2" PP-BUNA-N-BUNA-N

According to following spec

TECHNICAL DATA	
Part No	UP05B-BPS-PNG
Ratio	1:1
Capacity	54 l/min free flow
Air connection	1/4" (F) NPT
Maximum air pressure	0,8 (8) MPa (bar)
Inlet	1/2" (F) BSP
Outlet	1/2" (F) BSP
Max suction height	8 m
Max particle size	2,5 (3/32") mm (inch)
Material pump body	Polypropylene
Material diaphragm	NBR / Buna-N
Material balls	NBR / Buna-N
Material ball valve seats	Polypropylene
Weight (Gross)	3,278 kg
H.S. Code	84138100