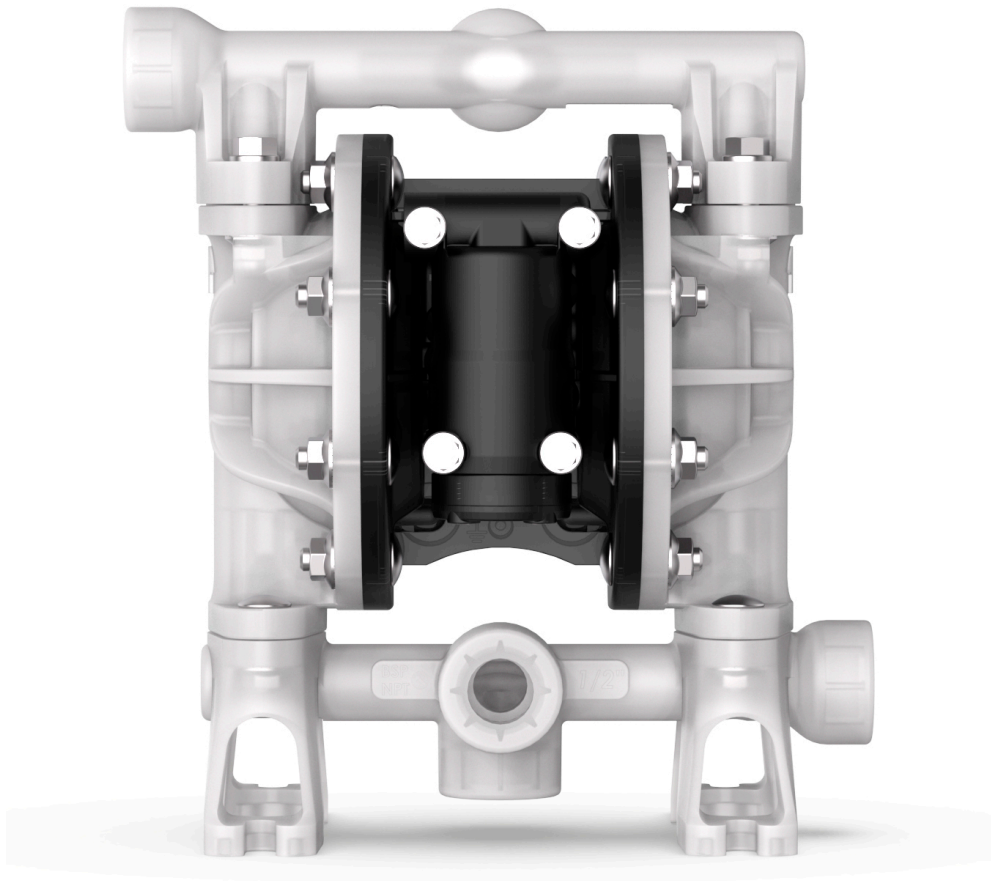


DIAPHRAGM PUMP 1/2" PP-SANTOPRENE- SANTOPRENE



Part No
UP05B-BPS-PMA

TECHNICAL DATA

DIAPHRAGM PUMP 1/2" PP-SANTOPRENE-SANTOPRENE

According to following spec

TECHNICAL DATA	
Part No	UP05B-BPS-PMA
Ratio	1:1
Capacity	54 l/min free flow
Air connection	1/4" (F) NPT
Maximum air pressure	0,8 (8) MPa (bar)
Inlet	1/2" (F) BSP
Outlet	1/2" (F) BSP
Seals	PTFE / Teflon®
Max suction height	8 m
Max particle size	2,5 (3/32") mm (inch)
Material pump body	Polypropylene
Material diaphragm	Santoprene®
Material balls	Santoprene®
Material ball valve seats	Polypropylene
Weight (Gross)	3,278 kg
H.S. Code	84138100