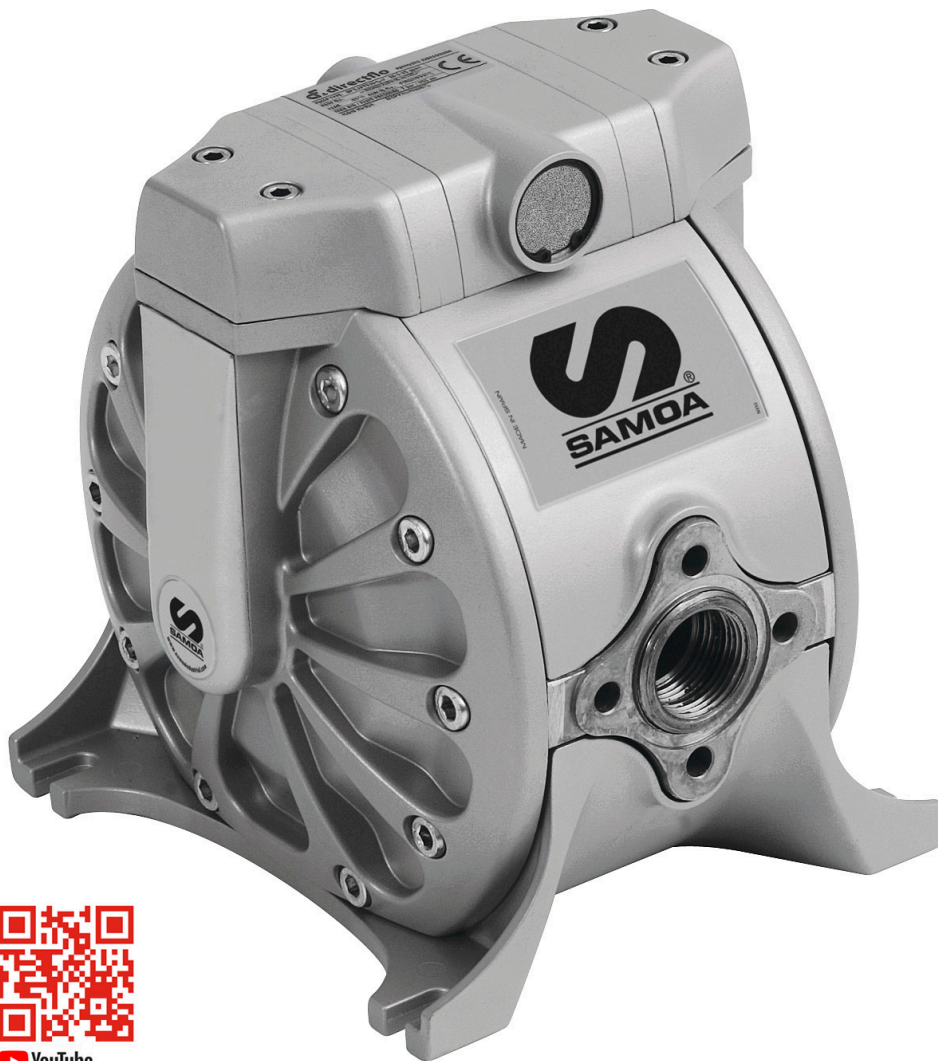




DIAPHRAGM PUMP 1" DIRECTFLO ALUMINIUM- SANTREPRENE-PTFE



Part No
DF100AASESTMBAS

TECHNICAL DATA

DIAPHRAGM PUMP 1" DIRECTFLO ALUMINIUM-SANTREPRENE-PTFE

According to following spec

TECHNICAL DATA	
Part No	DF100AASESTMBAS
Ratio	1:1
Capacity	100 l/min free flow
Air connection	3/8" (F) BSP
Maximum air pressure	0,8 (8) MPa (bar)
Inlet	1" (F) BSP
Outlet	1" (F) BSP
Seals	EPDM
Max suction height	7 m
Max particle size	4 (0,16) mm (inch)
Material pump body	Aluminium
Material diaphragm	Santoprene®
Material balls	PTFE / Teflon®
Material ball valve seats	Stainless steel (AISI 316)
Material push rod	Stainless steel (AISI 420)
H.S. Code	84138100